



UND Bookstore Masterplan/UND Clinic Programming



Design Rich Architect, LLC

February 2021

OVERVIEW

CONTENTS

01 EXECUTIVE SUMMARY

Purpose

Key Facilities Issues

Questions in Search of Answers

02 INTRODUCTION

Planning Perspective

University Mission & Strategic Goals

Mission Statement

Strategic Goals

University's Clinic Facilities Planning Process

Analysis Process

Key Planning Assumptions

03 DRIVERS

Control, Accountability, Key Performance Goals

Control and Accountability

Performance Goals

Department Configurations

Center for Sports Medicine

Northern Prairie Community Clinic

Department of Psychology Student

Health Services

University Counseling Center

04 SPECIFICS

Introduction

05 CURRENT FACILITIES

Hyslop Sports Center

Sports Medicine Program

Columbia Hall

Northern Prairie Community Clinic

Department of Psychology

McCannel Hall

Student Health Services

University Counseling Center

05 CURRENT FACILITIES

Bookstore

Deferred Maintenance

Construction Needs

06 RECOMMENDATIONS

Community Factors

Parking

Mass Transit

Space utilization

Center for Sports Medicine

Northern Prairie Community Clinic

Department of Psychology

Student Health Services

University Counseling Center

07 APPENDICES

Referenced Materials

FORWARD

DEDICATION

This Plan is dedicated to the success of all the current and future students and staff of University of North Dakota.

AUTHORSHIP

This Plan was authored primarily by:

*Chris Wetch
Les Bjore
Joyce Fries-Brune*

ACKNOWLEDGEMENT

The authors wish to acknowledge the valuable contributions of all the numerous individuals who generously shared their time, ideas and feedback.

*Jessica Foley,
John-Paul Legerski,
Jeff Weatherly,
Steven Westereng,
Cathy Ziegler,
Rosy Dub,
Alex Pokornowski,
Thomas Solem,
Lynette Geatz,
Suzanne Gandrud,
Jessica Doty.*

01 EXECUTIVE SUMMARY

PURPOSE

The purpose of the plan is to provide a specific process and documented road map for moving UND Clinic Programming to the current Bookstore location that:

- *Establishes the valuable input and discussion of leaders, staff and consultants.*
- *Assesses defines and prioritizes current and future facility needs for the clinic.*
- *Establishes cost estimates to support facility priorities.*
- *Provides preliminary renovations of plans for facility priorities. This information may be used to develop detailed design and construction plans as funds become available.*
- *Establishes an ongoing “living” document that will be used to complete follow-up project tasks and to support necessary changes in the future. This plan focuses on implementing improvements that address current facility needs.*
- *Establishes an ongoing link with the University’s deferred and ongoing maintenance efforts.*

KEY FACILITIES ISSUES

The facility needs of the University of North Dakota’s Medical Department are driven by several key factors:

- *Existing facility inequities among the department’s divisive locations.*
- *Existing needs for both public and private areas in a joint-use facility.*
- *Alignment of the University’s facilities with current and future educational program needs.*

01 **EXECUTIVE SUMMARY**

QUESTIONS IN SEARCH OF ANSWERS

At the time of drafting this Plan, there are many questions without answers. Section 02 describes these areas in more detail, but the most significant external issues or questions include the following:

- Time frames for future development may vary widely, but are projected to occur according to the time frames provided by the planning departments.*
- The recommendations in this plan are based upon “UNIVERSITY OF NORTH DAKOTA Academic Master Plan Report April 2018”^{*4} and the “One UND Strategic Plan 2017-2022”^{*5}. There may be unforeseen circumstances that affect the clinical programs’ enrollment projections negatively or positively.*
- The full implementation of this plan will require a combination of grants, bond measures and matching funds. Funding shall not be sought for this Plan until there is a degree of certainty that other projects in the sequence of events will happen.*

02 INTRODUCTION

PLANNING PERSPECTIVE

The most recent Facilities Master Plan was completed during the 2018 school year. Many important changes have resulted in a heightened need for the repositioning to this portion of the University. Relevant changes have included the following:

- *New plans for the Memorial Student Union.*
- *Plans for demolition of Columbia Hall-midterm (7-10 years).*
- *Plans for demolition of a portion of Hyslop-short-term (1-6 years).*
- *Need for right sizing of departmental spaces.*
- *Need for cohesive placement and functionality of use.*
- *Need for efficient and flexible use of space.*
- *Development of the educational programs that require strong support at a facility level.*
- *Given that the University will require additional sources of funds, it is critical to have a thorough understanding of the current facilities modernization and future construction needs, priorities and costs.*

02 **INTRODUCTION**

UNIVERSITY MISSION & STRATEGIC GOALS

The Facilities Master Plan must be developed to support the University's mission and strategic goals, so they are included here for reference.

MISSION STATEMENT

The mission of University of North Dakota is to provide transformative learning, discovery and community engagement opportunities for developing tomorrow's leaders.

STRATEGIC GOALS

- *Provide a strong undergraduate liberal arts foundation.*
- *Increase undergraduate, graduate, and professional retention and graduation rates.*
- *Deliver more educational opportunities online and on-campus.*
- *Enhance discovery at a level consistent with the most research-intensive universities.*
- *Foster a welcoming, safe, and inclusive campus climate.*
- *Meet educational needs of active-duty military personnel, veterans, and their families.*
- *Attract support for the university by actively engaging alumni and donors.*

02 INTRODUCTION

UNIVERSITY'S CLINIC FACILITIES PLANNING PROCESS

The planning process to date has included the following major components, steps and timeline.

- August 15, 2019
UND enlisted the service of Design Rich Architect
- September 4, 2019
Kick-off meeting with Facilities Mgmt.
- October 8, 2019
Meeting with NPCC at Columbia Hall
- November 25, 2019
Meeting with UND Student Health Services at McCannel Hall.
- December 6, 2019
Meeting with UND Counselling Services at McCannel Hall.
- January 8, 2020
Meeting with UND Sports Medicine.
- February 19, 2020
Meeting with Facilities Mgmt.
- COVID related delays
- January 29, 2021
Meeting with Facilities Mgmt.

ANALYSIS PROCESS

This section will analyze the “gap” between the goals, and the current condition of the facilities. It will review the facilities available and compare them to those desired. It will then make recommendations on additions or improvements in order to reach the goals of the University in Section 06.

The Five Phase Process

- *Phase 1: Laying the Groundwork*
Collaborate with campus/system leadership to align the efforts. The team meets to learn about data.
- *Phase 2: Defining the Problem*
Begin to investigate campus data and increase their knowledge about existing conditions.
- *Phase 3: Assessing Interventions*
Benchmark to identify and prioritize action points. Determine practices that positively or adversely affect facility success.
- *Phase 4: Implementing Solutions*
Set short-term, actionable objectives and long-term equity goals for priority areas of concern.
- *Phase 5: Evaluating Results*
Share findings and goals with the system/campus.

02 **INTRODUCTION**

KEY PLANNING ASSUMPTIONS

People involved in the building design are expected to interact closely throughout the design process. The owner, building occupants, and operation and maintenance personnel are to contribute their understanding of how the building and its systems will work for them once they occupy it. The following key assumptions underlie the information and recommendations of this Clinic Facilities Plan.

- *The new site location for the Clinic is based upon relocation of the UND Bookstore.*
- *The recommendations in this plan are based upon departmental use, square footages, adjacencies and accessibility.*
- *Existing locations are currently operating at, or slightly below their student capacities. The school witnessed a slight increase in clinical classroom loading according to the "University of North Dakota Academic Master Plan Report."^{*4}*
- *Facility deficiencies and under-utilization of existing clinic locations have been determined and are discussed in Section 05. Additional deficiencies may be identified and will need to be addressed in future amendments or updates to the Plan.*
- *The Plan will require review and development as the University's construction needs and timetable become more clearly defined.*
- *Joint use of spaces between Altru and UND has been a past practice and was discontinued due to differing leadership views. Continuation of this practice and support of the same planning policies is assumed.*

03 Drivers

CONTROL, ACCOUNTABILITY, KEY PERFORMANCE GOALS

The needs and major performance goals for unification of the University's clinics are identified.

CONTROL AND ACCOUNTABILITY

- *Current International Building Code (IBC)*
- *Current National Fire Protection – (NFPA 101)*
- *Centers for Medicare & Medicaid Services (CMS)*
- *Americans with Disabilities Act (ADA)*
- *International Mechanical Code (IMC),*
- *International Fuel Gas Code (IFGC)*
- *International Energy Conservation Code*
- *International Existing Building Code*

PERFORMANCE GOALS

The goal of the Clinics is to provide a sanitary and therapeutic environment where students can be treated quickly and effectively.

DEPARTMENT CONFIGURATIONS

Center for Sports Medicine

The primary functions of the Sports Medicine Program are to maintain the nationally accredited athletic training educational program, provide for the healthcare needs of the student athletes and teams of UND Athletics as well as the community, and to help with medical education of both undergraduate and graduate students.

*The UND Center for Sports Medicine (CSM) is an outpatient rehabilitation clinic which provides services to the student-athletes of the UND Department of Athletics, students from the general population of UND, as well as patients from the community and surrounding area. These patients are sent to the CSM from UND team physician, UND Student Health Services, and other practicing physicians. This clinical setting provides accreditation mandated educational opportunities for athletic training students, as well as elective clinical rotations for physical therapy students, 4th year medical students, family medicine residents and other health education students. Service within the CSM is provided by dual credential professionals (PT/ATC). *3*

Hours of Operation are typically Monday – Friday 8 a.m. – 4:30 p.m. (adjusted hours in summer months). Closed all legal holidays & campus closures.

Northern Prairie Community Clinic

Department of Communication Sciences & Disorders

Conducts comprehensive programs of undergraduate and graduate training leading to bachelor's, and master's degrees. The master's (M.S.) program in Speech-Language Pathology at the University of North Dakota is accredited by the Council on Academic Accreditation in Audiology and Speech-Language Pathology of the American Speech-Language-Hearing Association. Communication Sciences & Disorders is a rapidly growing field that offers tremendous personal and professional rewards. Communication sciences and disorders, include:

- *Phonetics*
- *Speech and hearing science*
- *Language development*
- *Audiology*

The Department of Psychology

The Department of Psychology has a multidimensional mission to provide quality undergraduate and graduate education, student advisement at both the baccalaureate and post-baccalaureate levels, teacher education for graduate students pursuing higher education positions, and a high level of faculty and student scholarship. The University of North Dakota studies in Psychology include:

Undergraduate

- *Psychology (B.A. or B.S.) Graduate*
- *Clinical Psychology (Ph.D.)*
- *General-Experimental Psychology (Ph.D.)*
- *Forensic Psychology (M.S.)*
- *Forensic Psychology (M.A.)*

Undergraduate Certificates

- *Behavioral Health*
- *Forensic Psychology*
- *Cyber Psychology*
-

Graduate Certificates

- *Behavioral Data Analytics*
- *Quantitative Research Methods*

The Ph.D. programs are scientifically-oriented and offer intensive training in the scholarly research and applied aspects of their areas. They are designed to produce respected scholars in the field as manifested in the generation of high-quality research which is disseminated in lecturing, writing, and presentations.

Students apply scientific findings in their respective area of specialization and integrate scientific and applied activities as a method of further enhancing the quality of each.

*Hours of Operation are Monday – Thursday 8 a.m. – 8 p.m. and Friday 8 a.m. – 4:00 p.m.
Closed all legal holidays & campus closures*

Student Health Services

Health Services

Staff specializes in medical care for college students in a comfortable, non-judgmental environment. The clinic is conveniently located on campus and easy to use with a wide array of services including lab, x-ray, and pharmacy.

Clinic Hours

Monday – Friday

8 a.m. – 4:30 p.m.

Closed all legal holidays & campus closures

Pharmacy Hours

Monday - Friday

9:30 a.m. - 4:30 p.m.

Closed all legal holidays & campus closures

General Medical Care

- *Illness, minor injury*
- *Preventative care*
- *Wart treatment*
- *Acne treatment*
- *Smoking cessation*
- *Laboratory*
- *Radiology (X-ray)*
- *Minor Surgical Procedures*
- *Pre-Travel Consultations*
- *Immunizations and TB Testing*
- *Allergy Shots*

Psychiatry and Mental Health Services

- *Mental Health Care*
- *ADHD Management*
- *Telemedicine*

Sexual Health

- *Contraceptive Counseling*
- *IUD & Nexplanon®*
- *STD Screening*
- *HIV Testing*
- *Pregnancy Testing*
- *Pap Tests*
- *Pre-exposure Prophylaxis (PrEP)*

Physicals

- *FAA Exams*
- *Pre-op Physicals*
- *Sports Physicals*
- *Annual Preventative Physical*

On-Campus Pharmacy

- *Prescriptions (new and refills)*
- *Over the counter medications*

University Counseling Center

Counseling Center

The UCC staff cares about the wellbeing of UND students. The primary goal of clinical services is to provide and connect students with appropriate mental health and substance use services that support their academic and personal goals. The UCC offers a range of therapeutic interventions and supports, including: Initial Assessment, Group Counseling and Workshops, Online Self-Help Programming, Individual Counseling, Substance Use Evaluation, Case Management, and Urgent/Crisis Services for UND students who are enrolled and have paid student service fees for the current semester.

Clinic Hours

Monday – Friday

8 a.m. – 4:30 p.m.

Closed all legal holidays & campus closures

Counseling Clinical Services

- Individual Counseling*
- Emergency Counseling Sessions*
- Group Counseling and Workshops*
- Personal Evaluations*
- Substance Use Services:*
 - BASICS*
 - Prime For Life*
 - Alcohol and Drug Evaluations*
 - Level 1 Outpatient Treatment*

Help in a Crisis

Emergency Sessions Available Daily at UCC

Mon – Fri: 8:00 a.m. – 4:30 p.m.

Outside Office Hours

FIRSTLINK

04 SPECIFICS

INTRODUCTION

Specifications outline and define the elements required to support the effective implementation and delivery of the University's Educational Program. They provide comprehensive guidance on the requirements and components of the University's physical presence. They serve as vital guidelines in the following aspects of the planning and development.

- *Provision of adequate and appropriate space to support the clinical programs.*
- *Public vs. Private services provided.*
- *Connections between the clinical programs and dependencies between departments.*
- *Expand the boundaries of knowledge, discovery and technology.*
- *Shared spaces*
- *Encourage collaboration between teaching, research, and clinical work.*

It is important to emphasize that the goals of ensuring adequate spatial configurations and cost objectives be equitable.

The following discussion presents the updated specifications for the Clinical configurations of:

- *Sports Medicine - a multidisciplinary field involving many facets of the health care community*
- *Northern Prairie Community Clinic (NPCC)*
 - *-Communication Sciences & Disorders (CSD)- Study in speech and language disorders,*
 - *-Department of Psychology- Study the intricacies of the human mind.*
- *Student Health Services (SHS)*
 - *Health Services - general medical care including preventative care, and diagnosis and treatment of illnesses and injuries.*
 - *University Counseling Center - connect students with appropriate mental health and substance use services that support their academic and personal goals.*

05 CURRENT FACILITIES

The University of North Dakota maintains several clinical locations throughout the campus. The following are being considered for relocation in the, soon to be vacated, UND bookstore location.

- Sports Medicine Program at Hyslop Sports Center
- Northern Prairie Community Clinic at Columbia Hall
- Student Health Services at McCannel Hall

DEPARTMENTS	Existing SqFt	Requested SqFt
SPORTS MEDICINE	2,760	6,800
NORTHERN PRAIRIE COMMUNITY CLINIC		
Communication Sciences & Disorders (CSD)	11,865	12,288
Department of Psychology	8,051	8,388
STUDENT HEALTH SERVICES		
Health Services	9,593	9,593
University Counseling Center	8,282	8,282
Grand Total	40,551	45,351
UNIVERSITY BOOKSTORE	30,339	

Sports Medicine – the 6,000 sq. ft. size increase is due to the anticipated expansion of providers and services. An extra 800 sq. ft. is requested for future expansion.

Northern Prairie Community Clinic – The size increase is due to the addition of three office spaces. Student work area, kitchenette, and a staff restroom are also requested, but may be achievable with increased efficiency in design and co-existing with other departments rather than increasing square footage.

Department of Psychology - Increase is due to the current status of full to capacity at peak hours.

Student Health Services – Feel their space is the right size, but need to improve on the efficient use of the space.

University Counseling Center - Feel their space is the right size, but may need less space if CVIC UND is not included in the move.

05 CURRENT FACILITIES

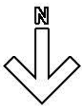
HYSLOP SPORTS CENTER

SPORTS MEDICINE PROGRAM

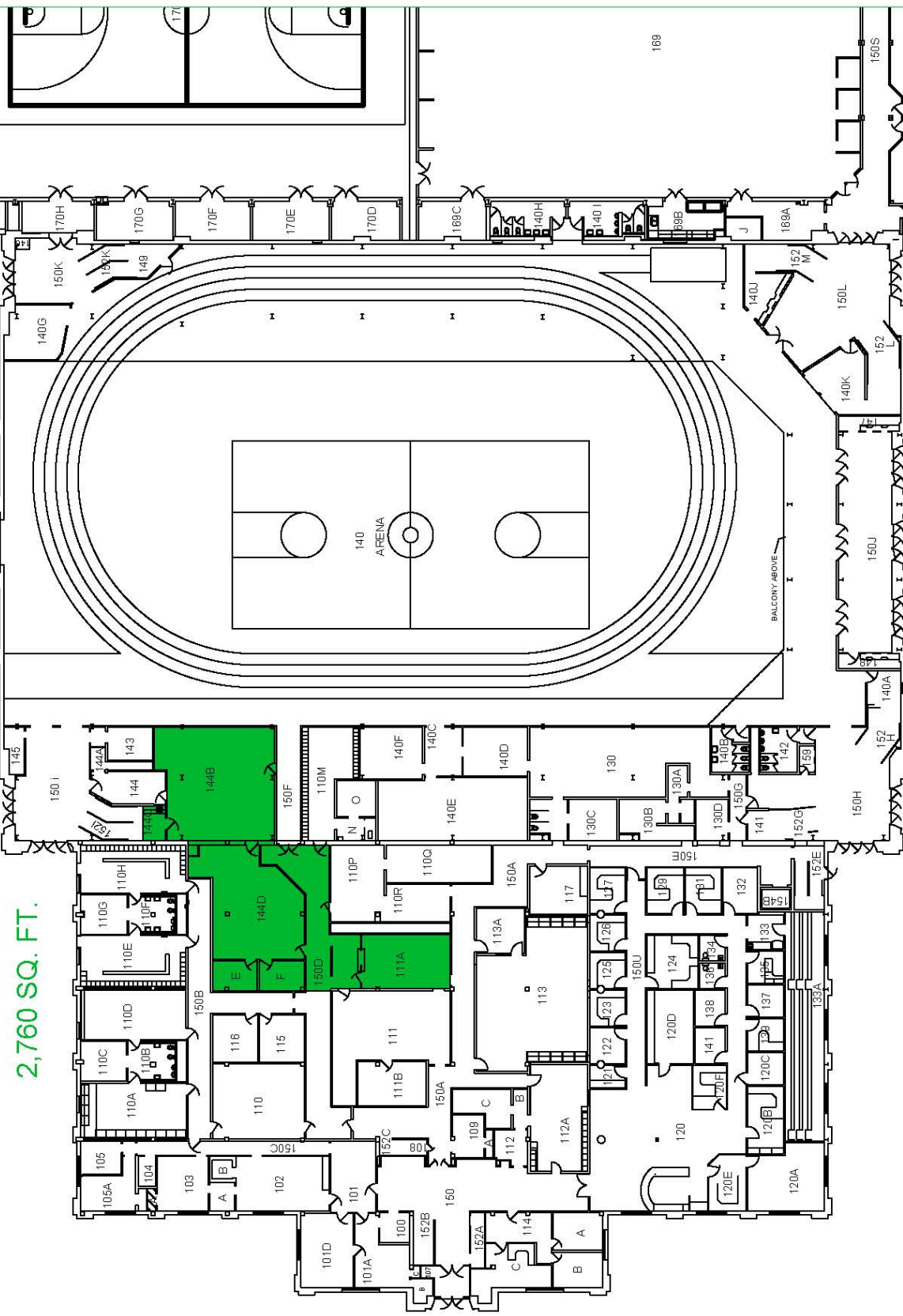
Sports Medicine actually takes up very little space, but borrow a lot from other departments. They have 2 individual offices located on 1st floor plan they are listed as offices 144 E and F. and 144 D is their common area. Some of the spaces they share are 101 D billing/collections/patient records, 144B, the Athletic Training Room, 110 the Weight Room, 111A the Cardio Room, 140 the Arena, 169 the large Weight Room and 190 the pool.

Their patient load is both public and private use. Their private user are students and staff. They have about 10 occupants who service approximately 45 patients per day. They anticipate their patient load and their staff to double once they begin advertising.

Sports Medicine has determined they need close to 6000 gross square feet. Current total square footage is 2,760 gross square feet. They would like their own entrance and would like to be connected to the Clinical Education Center of the Altru offices that are next door. They require offices for their technicians but generally would like an open floor plan for their equipment and have no concerns about privacy. They have no need of a reception area as each of the practitioners takes care of their own patient load. They are planning on changing their curriculum from a bachelor's degree program to a Master's program, in which case they would also benefit from having space to conduct research.



2,760 SQ. FT.



University of North Dakota

Building #24

Hyslop Sports Center
First Floor Plan
Scale - 1"=40'

05 CURRENT FACILITIES

COLUMBIA HALL

NORTHERN PRAIRIE COMMUNITY CLINIC

While staff offices for the clinic are not currently included in the project. three (3) offices are included and expansion to include three (3) more is anticipated.

The Reception window has been set back in the corridor to provide a good-sized entry area for wheel chairs and scooters. This creates a security issue in that the receptionist cannot view the corridor which is lined with chairs and is also used as a waiting area. Clinic rooms need to be closer to the Reception desk, so that the receptionist, the students, and the clients do not have to walk far to get to the rooms.

Communication Sciences & Disorders (CSD) has a large room (660 sq.ft.) used for therapy groups, Parkinson groups, Aphasia groups, Group Supervision, Conference room and it is used often.

The Director's rooms and the Clinic Manager room are subject to distraction as the student's work area is right outside their door. The Kitchen area, intended for staff, is well used by students due to it's proximity to the student's work area.

All the therapy rooms have video. The current treatment rooms are of good size. The large group therapy rooms are located near the entrance of the building. Observation windows are properly located, and the private practice rooms do not need observation. There is noise transference through the ceiling and ductwork which makes privacy and noise a big issue.

Counseling keeps using the observation rooms for labs which is interfering with scheduling clients for those rooms. Counseling thinks that these rooms are good teacher tools. Keep the observation rooms if possible.

Staff and clients share the same restrooms which could possibly become a security issue.

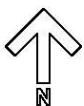
CSD only needs a classroom three (3) times a year, and would consider the possibility of borrowing a room in Student Health for those days.

There are mini storage rooms all over. Care must be taken about what goes to regular storage verse's storage of test materials which has to remain locked as well as file storage. Basically, there are three (3) types of storage: Records, Testing materials, Treatment materials (general). Not Having enough Filing Space is an issue.

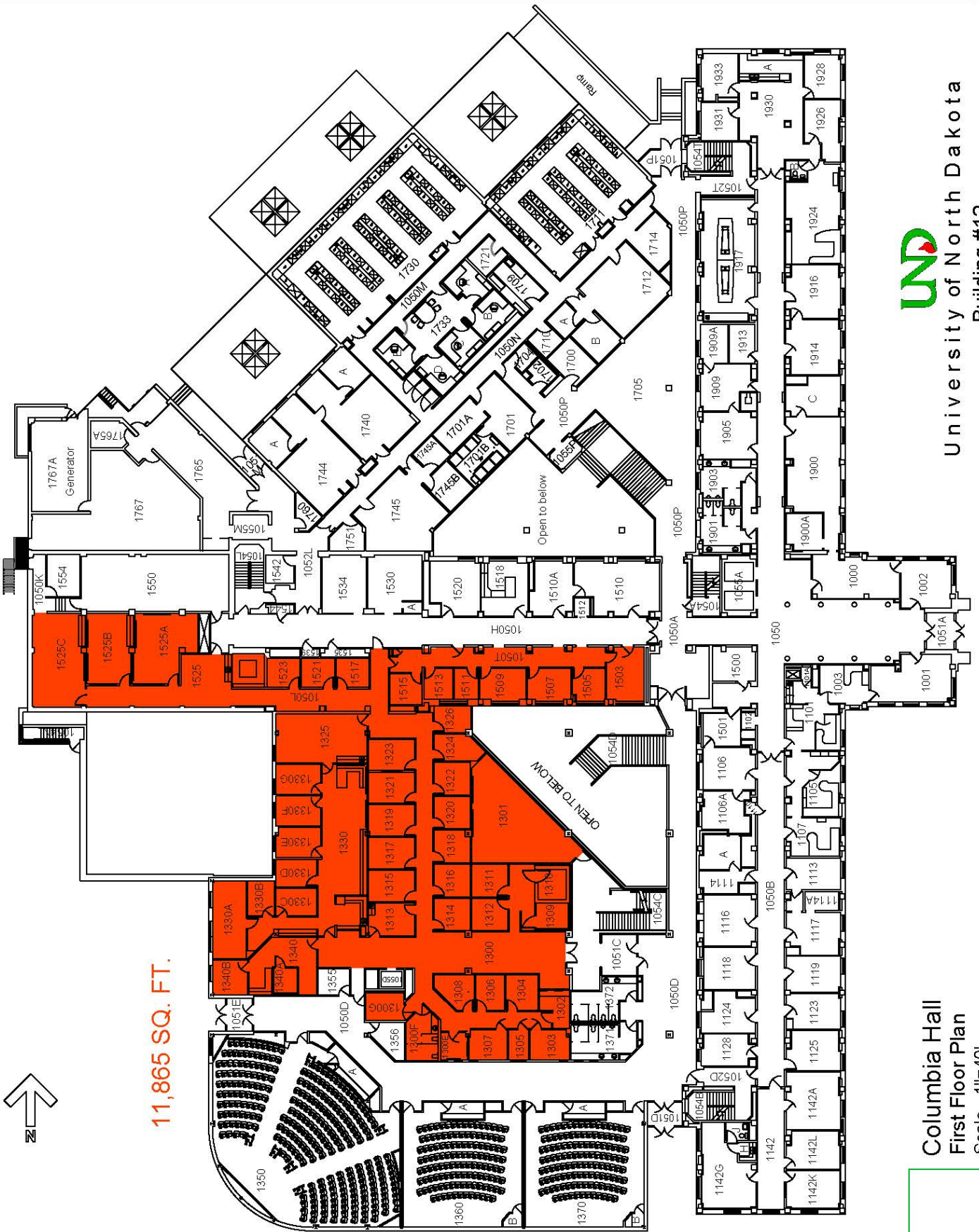
Child Therapy Rooms do not have a restroom that is conveniently accessed. They need to exit the secured space and tend to become locked out.

Security is an issue on both floors, therefore, only one (1) Entry/Exit door is unlocked, all others are kept locked.

The two sound booths will move with the department.



11,865 SQ. FT.



UND
University of North Dakota
Building #12

Columbia Hall
First Floor Plan
Scale - 1"=40'

05 CURRENT FACILITIES

COLUMBIA HALL

DEPARTMENT OF PSYCHOLOGY

The Psychology offices are in a “T” configuration on second floor, similar to CSD, and are not included in the project.

Psychology practice rooms are shared with CSD. All of the rooms are filled with after school therapy sessions during their peak time (3-7 P.M.). Monday and Wednesdays from 1-2 P.M., are busy times as well. Psychology labs are in the basement.

Rooms in the basement are individually locked with a keycode system.

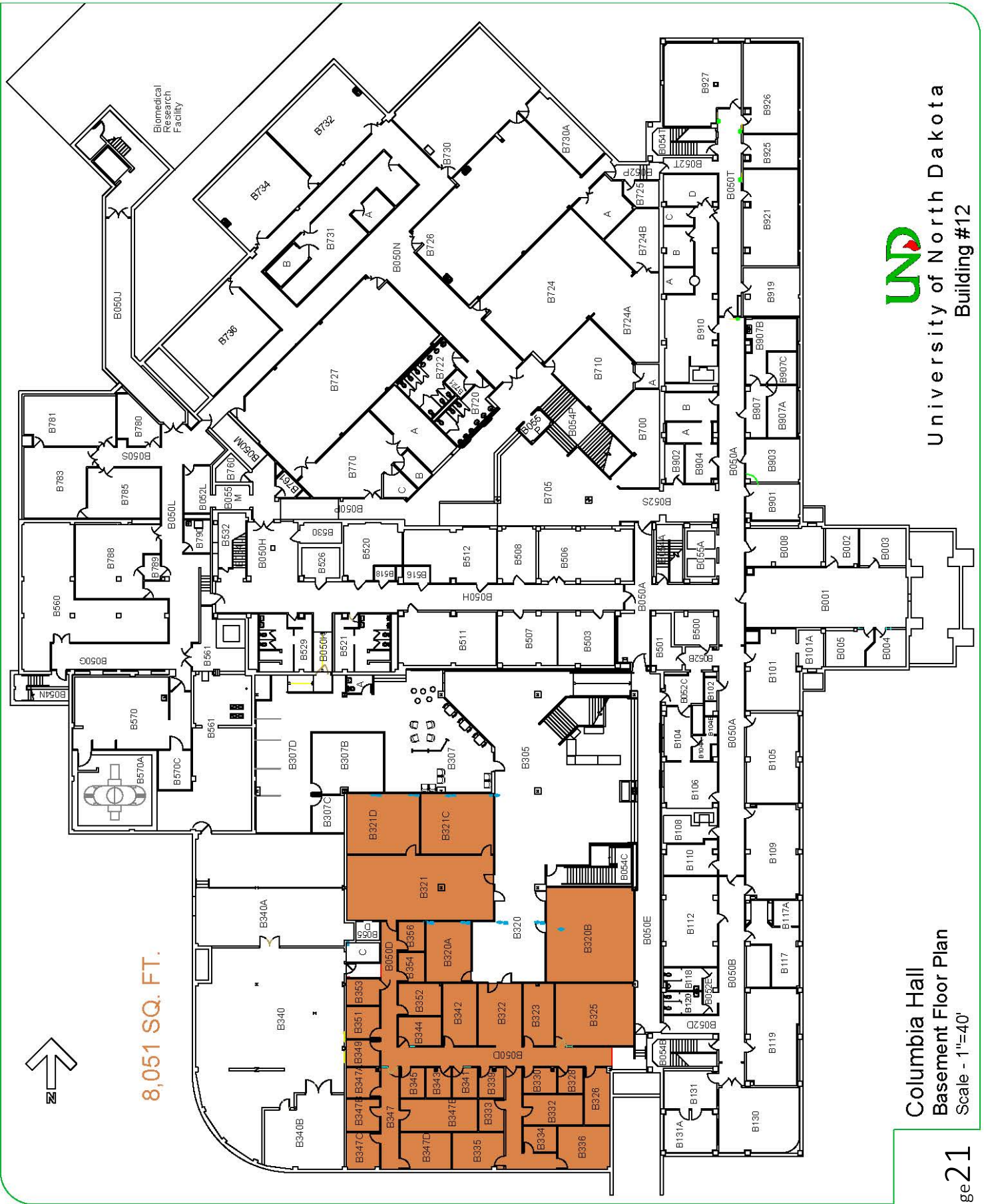
Spatial needs:

Non-class Lab Service and Research Lab rooms

Office of Graduate Students

Reading/Studying Room

Clinical Practice Service and Non-class Lab Service Control Rooms



University of North Dakota
Building #12

05 CURRENT FACILITIES

MCCANNEL HALL

STUDENT HEALTH SERVICES (SHS)

Student Health Services (SHS) feel they are the right size but could benefit from more efficient use of space. The clinic is conveniently located on campus and easy to use with a wide array of services including lab, x-ray, and pharmacy.

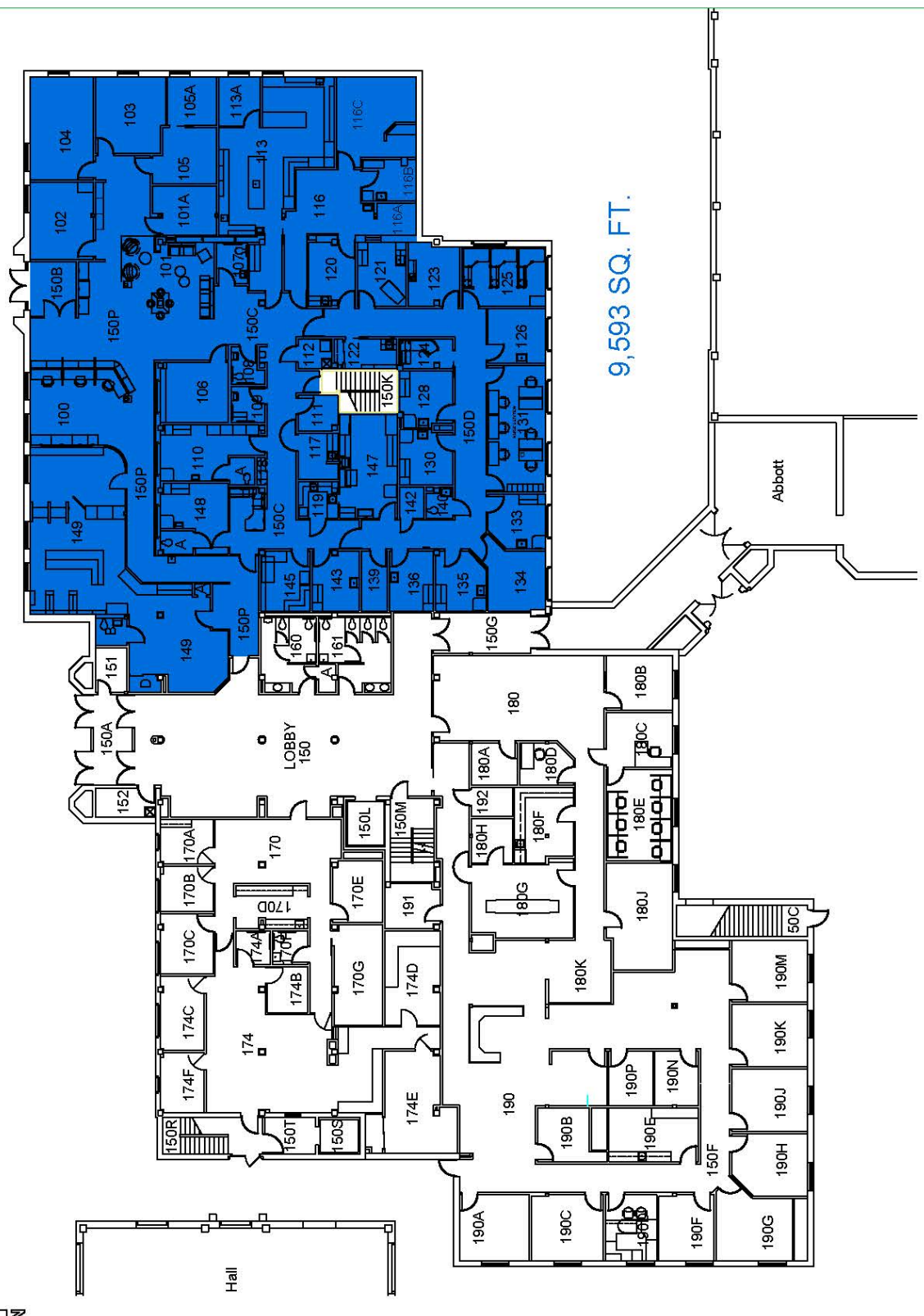
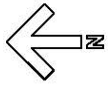
Restrooms and immunization stations need to be more discrete. The lab is the right size and some of the issues with the lab are that the telescopes need to be next to the computer and the big area in the back with countertop gets pretty busy when they have projects like flu serum and needs to be retained. The X Ray area's interior walls are lined with lead to confine the radiation to that space, it also is the right size.

Pharmacy space is as small as it can be without violating the square footage requirements. It has two refrigerators, one for meds and one for lunches. There is a hallway separating the pharmacy from the exam spaces that, with proper planning, can be eliminated.

There is a set of standards for every exam room and they need to be arranged so that patient privacy is paramount. It was suggested that patients access exam rooms from one side and healthcare provider access from the other side in order to achieve maximum patient privacy. The individual exam rooms will also require sound insulation in the walls and ceilings. The procedural room is centrally located and is where they do the actual work of fixing persons. Two rooms are used for FAA examinations and contain private toilet rooms. The excess space at the reception area can be absorbed by the Exam rooms that need to be bigger.

Insurance, medical records office and other support people need to be grouped together. There are four kiosks located at the entrance for filling out necessary forms. The office of the medications administer needs a couple of computers and direct access to the medicine room.

Storage closets are scattered and they wish them to be consolidated. Space needs to be provided for recycling and the shredded paper disposal bucket (large).



9,593 SQ. FT.

Abbott

05 CURRENT FACILITIES

MCCANNEL HALL

COUNSELING SERVICES

Second floor of McCannel Hall is dedicated to Counseling Services which contains 8,282 square feet of programmable space. The interior stair used as a fire escape route is not included in the area calculation.

The Conference Room is currently being shared between SHS (occupying an average of five hours per week) and Counseling (occupying an average of 10 hours per week). Staff meetings using the Conference Room can have as many as 45 people so the room should be a large space with room dividers. Rooms used for groups such as Alcohol and Drug Addiction or Mental Health Therapy may also be shared with SHS. Kiosks for patient input for check-in are to be compatible/combinable with the kiosks with SHS.

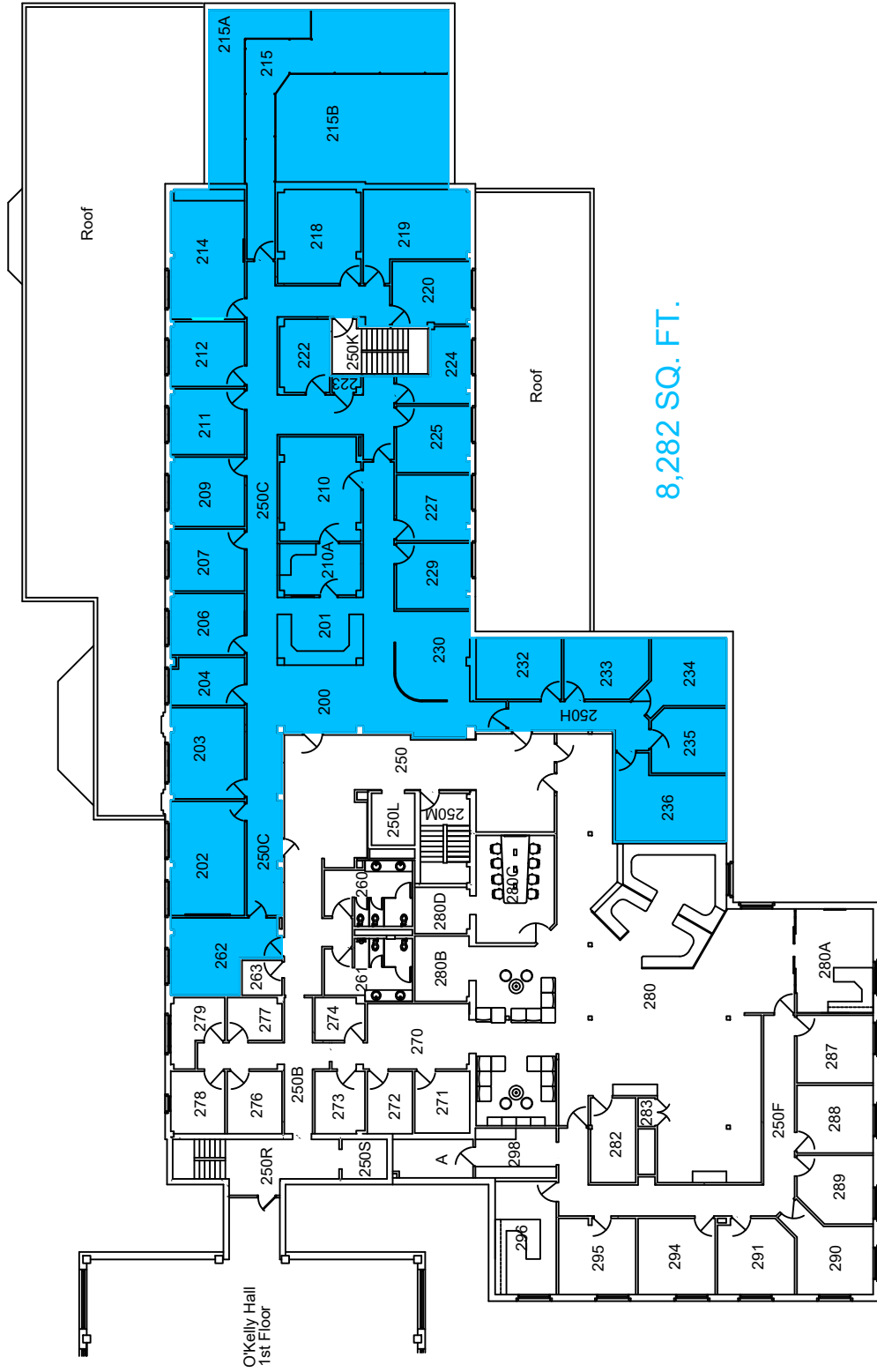
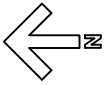
Addiction and Mental Health records must be kept separate. Cameras are utilized in some of the Training/Therapy rooms.

CVIC UND is currently in the Counseling Services area (occupying 550 square feet) may not be included in the future programmable space.

The public and students need to be funneled through the spaces separately to avoid a conflict of patient privacy. Shared spaces need centralized access to avoid wanderers.

Distinction should be made in planning regarding therapy vs. support.

The staff offices are clustered away from the training and therapy rooms, but close to the receptionist/waiting areas.



8,282 SQ. FT.

05 CURRENT FACILITIES

BOOKSTORE

The Bookstore opened in 2001, is located on a pedestrian trajectory to the north of the core of the main campus and south of the School of Medicine and Health Science site, a walk that is brutally cold on winter days. The building is located in the Athletics district.

The property is adjoined with Altru Family Medicine, which presents an opportunity for shared use spaces.

The Bookstore is sandwiched by parking lots on two sides, a street to the south and the entrance greenery of The Ralph Engelstad Arena entrance to the north.



05 CURRENT FACILITIES



05 CURRENT FACILITIES



05 CURRENT FACILITIES

BOOKSTORE

DEFERRED MAINTENANCE

Copied from the "Facility Condition Assessments." *1

BLDG #	BUILDING NAME	BLDG TYPE	YEAR BUILT	SQUARE FEET	CRV (\$)	RENEWAL COSTS (\$) 10 yr.	FCNI	FCI
0041	UND Bookstore	RT	2000	32,347	5,829,000	873,960	0.15	0.01

Project Number	Building Name	Project Title	Priority Class	Project Classification
0041ES01	UNIVERSITY BOOKSTORE	SELECTIVE EIFS RESTORATION	Non-Critical	Corrective Action
0041SI01	UNIVERSITY BOOKSTORE	SELECTIVE EIFS RESTORATION	Non-Critical	Corrective Action

0041	UND BOOKSTORE	DOOR OPERATOR, POWER-ASSIST	ENTRY AIRLOCK	
0041	UND BOOKSTORE	FLOORING - CARPET, TILE OR ROLL, STANDARD	OFFICE/SUPPORT	

CONSTRUCTION NEEDS

The concrete floors will need to be trenched for the addition of plumbing in the client rooms. The zones for the air handling units (HVAC) will need to be reconfigured. Connection to the Altru Family Medicine will need to be introduced. Electric, Communications, and Fire Alarm and Suppression will need to be reconfigured. Finishes will be removed and replaced. And the deferred maintenance items will be alleviated. Offices will be supplied with new furnishings.

The cost for renovation is estimated at \$400/sq.ft. or \$12M. The cost for relocation is \$400/office, for a cost of approximately \$50,000.

06 RECOMMENDATIONS

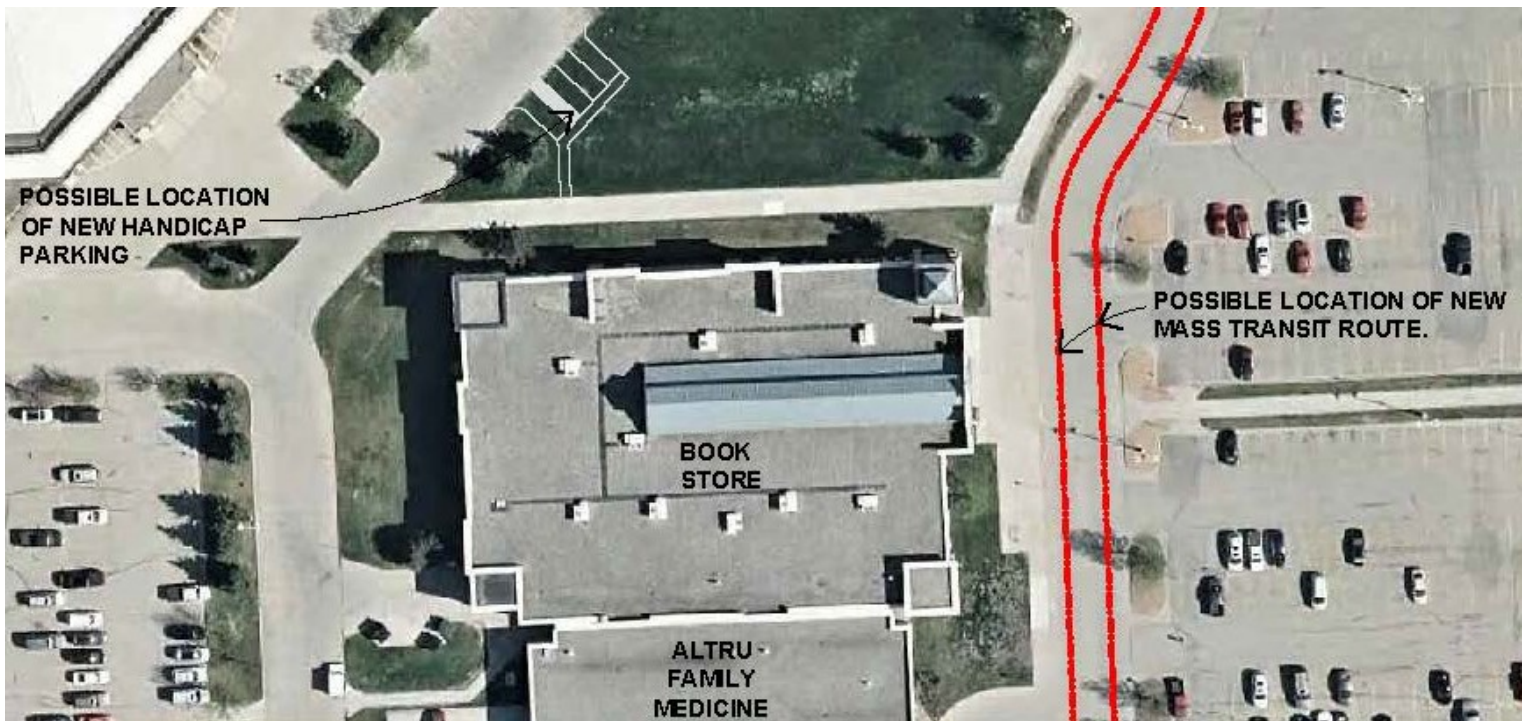
COMMUNITY FACTORS

PARKING

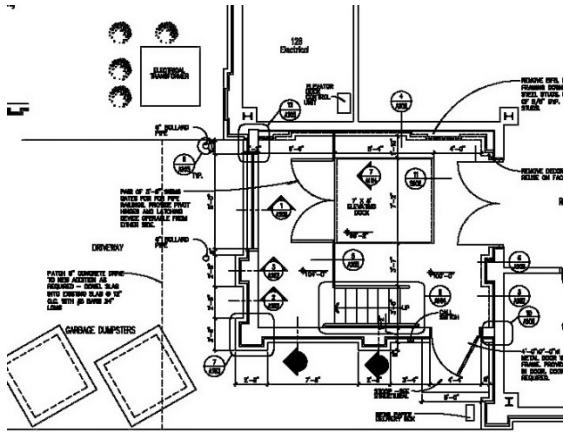
The University has parking lots on East and West sides of the building that are designated as “A” lots. Parking to the North is handicap parking for “The Ralph”. If additional handicap parking is required it logically may be added to the southern side of the existing handicap parking lot to the North.

MASS TRANSIT

There currently are no mass transit routes that are convenient to this building location. It may be beneficial to investigate the possibility of adding a route from the University core to the new School of Medicine.



06 ***RECOMMENDATIONS***



The Book Store's loading dock is to remain. As well as the restrooms and the monumental pillars decorating the interior of the retail space.



06 RECOMMENDATIONS

DEPARTMENTS	Existing SqFt	Requested SqFt	Option 1 SqFt	Option 2 SqFt	Option 3 SqFt
SPORTS MEDICINE	2,760	6,800		6,861	
NORTHERN PRAIRIE CC	11,865	12,288	12,372	12,195	12,365
PSYCHOLOGY	8,051	8,388	8,086	8,373	
STUDENT HEALTH	9,593	9,593	9,595		9,593
SERVICES COUNSELING	8,282	8,282			8,098
Grand Total	40,551	45,351	30,053	27,429	30,056
UNIVERSITY BOOKSTORE	30,339				

The height to the top of the roof structure is between 17' and 18' which does not allow for the addition of a mezzanine level.

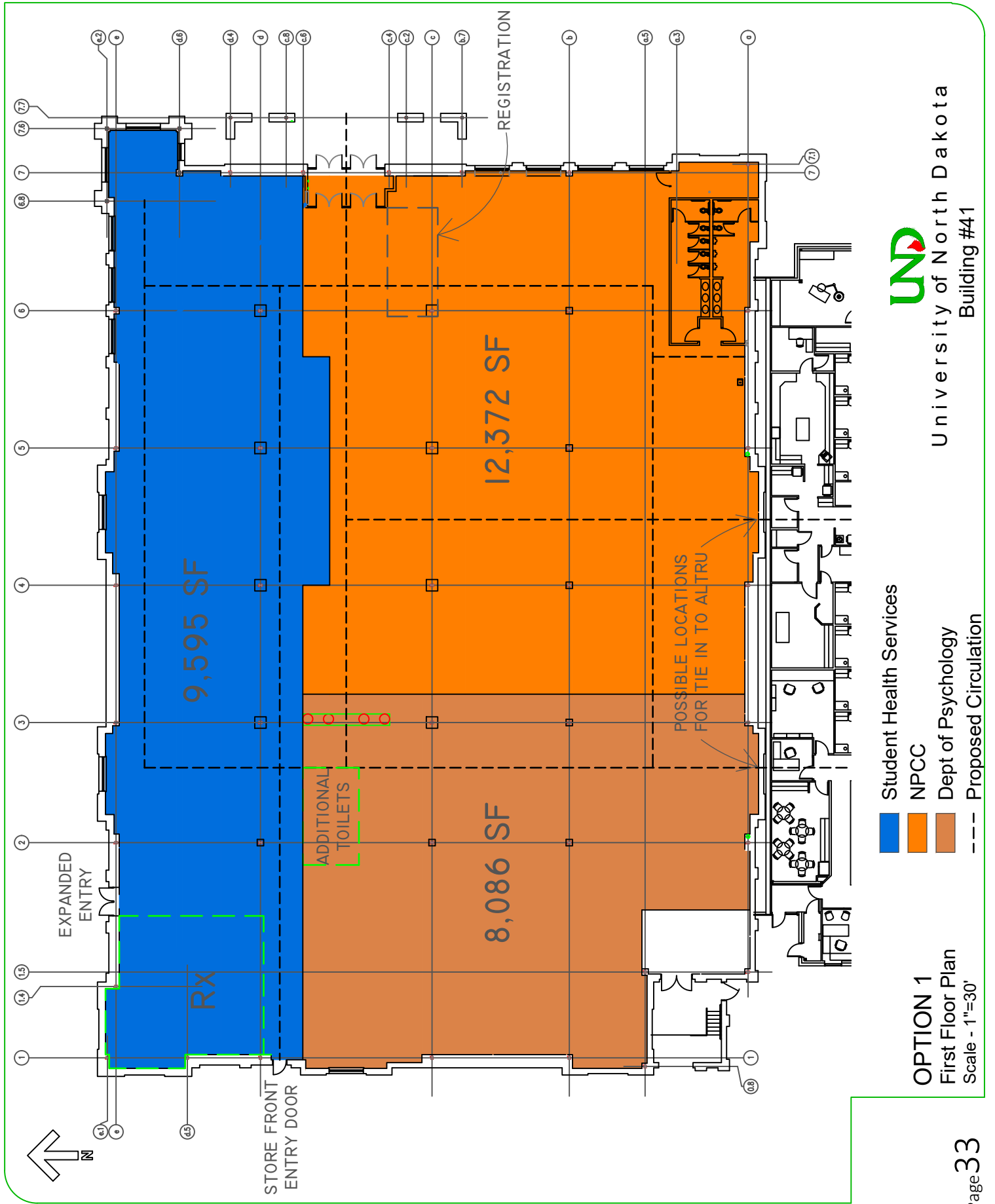
Not all the departmental spaces listed in the table above will fit into the Bookstore space.

Three options are listed.

1. Includes Northern Prairie Community Clinic, Psychology, and Student Health Services. Excludes Sports Medicine and Counseling.
2. Includes Northern Prairie Community Clinic, Psychology and Sports Medicine. Excludes Student Health Services and Counseling.
3. Includes Northern Prairie Community Clinic, Student Health Services and Counseling. Excludes Psychology and Sports Medicine.

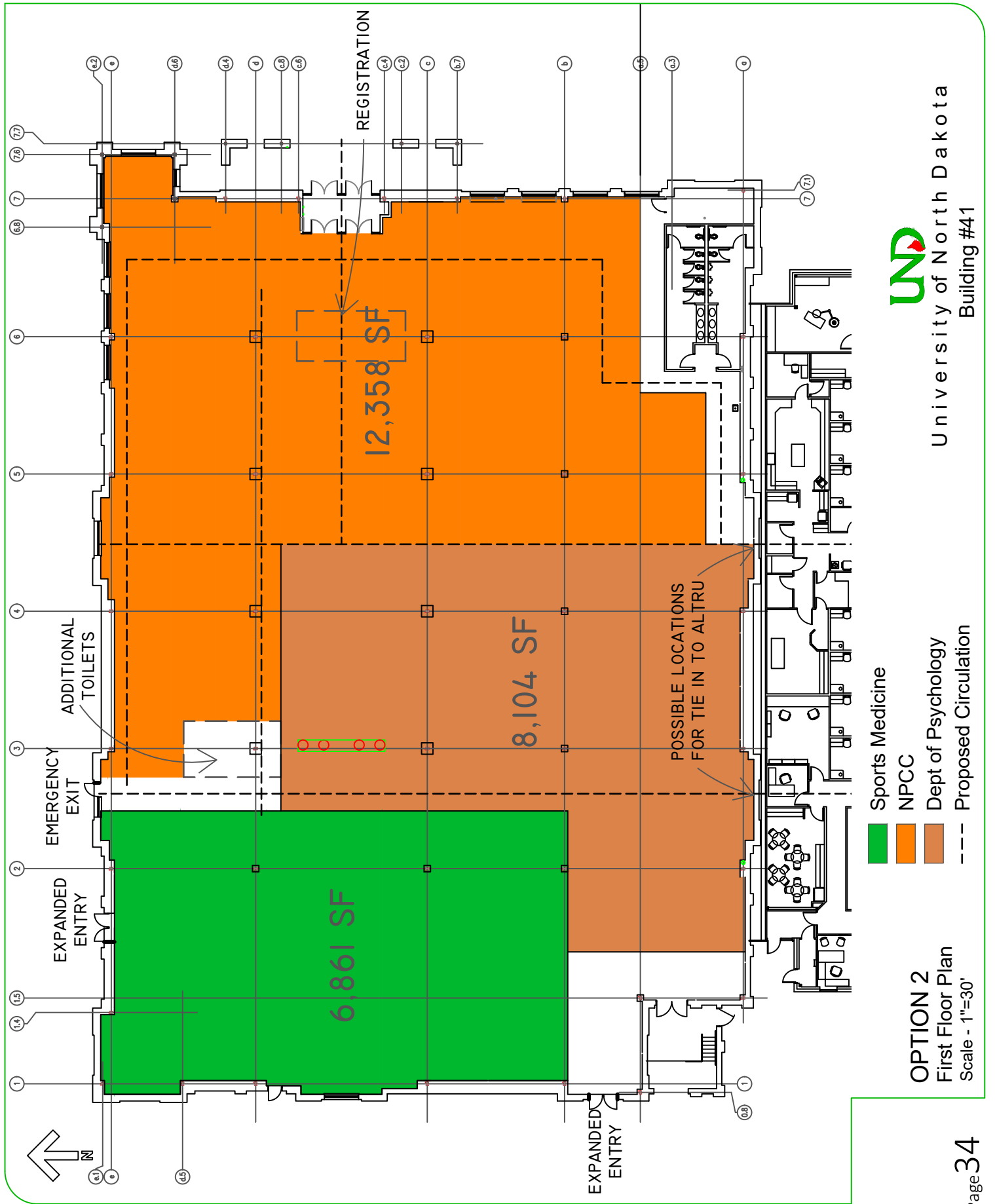


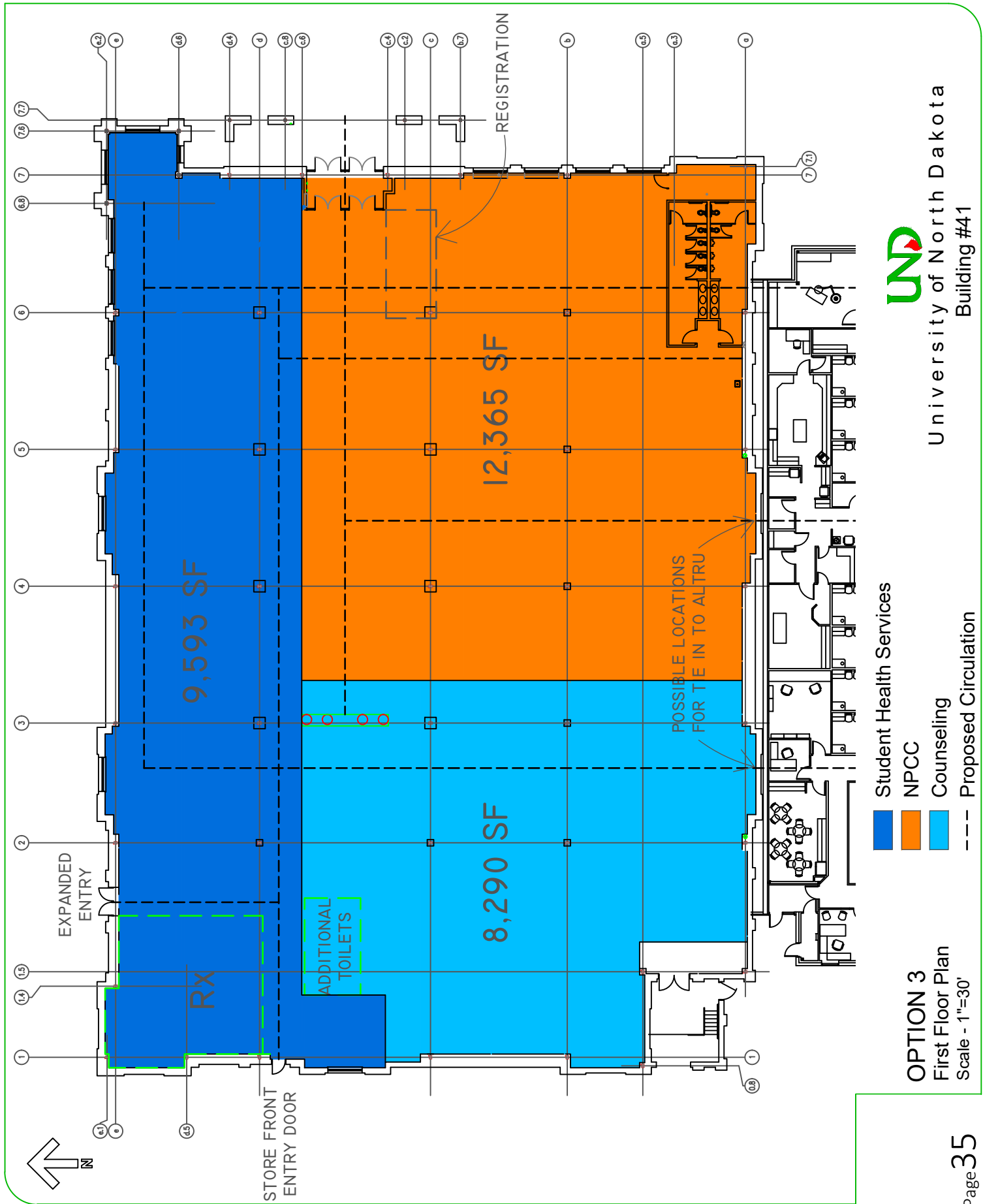
Sketch of additional handicap parking and sidewalk leading to expanded side entry.



- Student Health Services
- NPCC
- Dept of Psychology
- Proposed Circulation

OPTION 1
First Floor Plan
Scale - 1"=30'





- Student Health Services
- NPCC
- Counseling
- Proposed Circulation

OPTION 3
First Floor Plan
Scale - 1"=30'

06 **RECOMMENDATIONS**

SPACE UTILIZATION

Center for Sports Medicine

The layout diagram for their equipment includes:

- 6 rehabilitation plinths,
- 3 modality carts,
- Hydrocollator,
- 2 UBEs,
- medicine ball rack,
- a bounce back,
- 2 weight racks,
- an extra-large high-low table,
- cabinet,
- cold Whirlpool,
- ice machine,
- refrigerator freezer,
- slide board,
- agility ladder,
- Woodway treadmill,
- 2 life fitness climbers,
- 2 ellipticals, two life cycles,
- 2 Precor bikes,
- a baps board,
- balance board,
- 2 yoga storage racks,
- leg press,
- a glute/hamstring machine,
- hamstring curl,
- Keiser machine,
- bench press,
- TRX station,
- squat rack/bench press,
- four-way hip machine,
- a large weight rack,
- a bench press bench,
- 3 Swiss balls of various sizes,
- parts stand,
- in computer,
- a Biodex,
- 4 plyometric boxes of various size, and
- a therapy pool.

06 RECOMMENDATIONS

SPACE UTILIZATION

Northern Prairie Community Clinic

Retain a large area at the entry for people in wheelchairs and scooters to provide ease of access and provide simplicity of circulation.

Must have a student computer lab and staffing area.

Need to separate the Director's rooms as well as an office for the Clinic Manager from the student's rooms; Desire three (3) additional offices.

All the observation windows are to be properly located according to existing conditions at NPCC.

There is need for a Student commons area for collaboration and individual workspace with a kitchenette.

Provide for three (3) types of storage: Records, Testing materials, Treatment materials (general).

Move the large group therapy rooms and clinic rooms closer to the Reception desk, so that the receptionist, the students, and the clients do not have to walk far to get to the rooms. What about an intercom system?

Counseling keeps using the observation rooms for labs and it is interfering with trying to schedule clients for those rooms. Counseling thinks that these rooms are good teacher tools. Keep the observation rooms if possible.

Would like to have Staff bathrooms separate from Client bathrooms.

Not Having enough Filing Space is an issue. Increase size by 30%.

Security is an issue. Only one (1) Entry/Exit door is unlock, all others are kept locked.

Noise is a big problem.

Need sink, toilet room and utility room for child cleanup.

Audiological sound proof booths will move with department.

Optimal size for individual therapy rooms is 130 square feet.

06 RECOMMENDATIONS

SPACE UTILIZATION

Department of Psychology

Spaces in the Psychology Lab are used for testing and assessments.

The research spaces are for studying human behavior. The rooms are shared use, adequate size and there are video cameras in each room.

There are a couple lab and storage rooms one which contains a data tower for departmental observation.

A large general classroom is needed and a few large classrooms for honors.

The doorway into the lobby reception area is unlocked but all of the other rooms are kept locked with a keycode system.

06 RECOMMENDATIONS

SPACE UTILIZATION

Student Health Services

Student Health Services (SHS) feel they are the right size but could benefit from more efficient use of space. The Clinic provides a wide array of services including lab, x-ray, and pharmacy. The lab is the right size at 850 sq. ft.. Layout shall show the telescopes next to the computer and a large countertop area for projects that need lots of space. The X Ray area will include a waiting area, staff office, x-ray office, and x-ray room with interior walls that are lined with lead to confine the radiation to that space. Size of the Pharmacy space is to be maintained and planned according to prevailing requirements.

Locations of restrooms and immunization stations shall be located out of the main traffic flow. Patient access to exam rooms shall be from one side and healthcare provider access from the other side of the room in order to achieve maximum patient privacy. Door swings, if used, must be carefully planned to maintain patient privacy. The exam rooms will also require sound insulation in the walls, ceilings and ductwork. Two rooms shall be provided for FAA examinations and shall contain private toilet rooms and adequate linear dimension for eye chart exams.

The office of the medications administer needs a couple of computers and direct access to the medicine room. Group together insurance, medical records office and other support people. Provide space for four kiosks near the entrance and receptionist for filling out necessary forms.

Storage closets shall be consolidated and exhibit proper signage. Provide space for recycling and the shredded paper disposal bucket (large).

06 **RECOMMENDATIONS**

SPACE UTILIZATION

University Counseling Center

University Counseling Center also feel they are the right size but could benefit from more efficient use of space. T Counseling Center Center diagnoses and treats alcohol and drug addiction and mental health issues. Privacy and safety issues are paramount.

Group and individual therapy rooms are shareable with Northern Prairie Community Clinic therefore must be easily accessible, to minimize wandering. Individual therapy rooms are to surround the Group therapy rooms and should have two doors, one going into the group therapy area and the other door going to a private corridor.

CVIC UND is part of the counseling centers space programs they may not be included in the move to the bookstore. There are three rooms currently used by CVIC UND totalling 514 square feet.

Training / therapy rooms are equipped with cameras. Staff offices are to be close to the front, near the reception/waiting areas. They need separate areas for addiction records and mental health records. A confidential room is needed that is to be double locked. Group and individual therapy rooms shall be separate from staff rooms.

Circulation through the Counseling Center is to funnel the public and the students through the space separately and should be planned to avoid creating conflict of patient privacy (labeling). Planning should also provide for hallway conversations.

07 APPENDICES

Referenced materials

1. “Facility Condition Assessments.” University of North Dakota Campus Master Plan Appendix C, ISES Corporation
April 1, 2016, Web: February 2020
2. “Space Utilization.” Campus Master Plan Appendix D, Hay Dobbs
January, 2016, Web: February 2020
3. “Proposal for relocating the UND Center for Sports Medicine in the Clinical Education Center.” Department of Sports Medicine, School of Medicine and Health Sciences, University of North Dakota
January 16, 2018, Dept. of Sports Medicine: February 2020
4. “Master Plan Vision and Framework.” University of North Dakota Academic Master Plan Report, Sasaki
April 2018, Web: February 2020
5. “One UND Strategic Plan 2017-2022.” Strategic Planning Committee
2017, Web: February 2020
6. “Memorial Union / McCannel Hall Master Plan Final Report.” WTW Architects
July 2017, Web: February 2020